

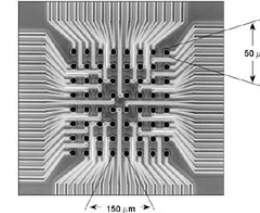
MED Probe (Diversification)

Choose the best one for your experiment

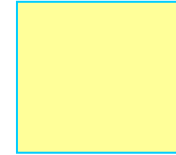
1. 8 x 8 arrays

Parts number	Array size	Electrode size	Interpolar Distance	Reference	Chamber Depth
MED-P2105	0.7 x 0.7 mm	20 μ m	100 μ m	8.5 mm	5 mm
MED-P210A	0.7 x 0.7 mm	20 μ m	100 μ m	8.5 mm	10 mm
MED-P5155	1 x 1 mm	50 μ m	150 μ m	8.5 mm	5 mm
MED-P515A	1 x 1 mm	50 μ m	150 μ m	8.5 mm	10 mm
MED-P5305	2 x 2 mm	50 μ m	300 μ m	9.2 mm	5 mm
MED-P530A	2 x 2 mm	50 μ m	300 μ m	9.2 mm	10 mm
MED-P5455	3 x 3 mm	50 μ m	450 μ m	10.2 mm	5 mm
MED-P545A	3 x 3 mm	50 μ m	450 μ m	10.2 mm	10 mm

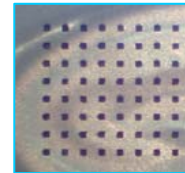
MED-P515A close up view



MED-P210# (0.7 mm)

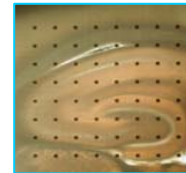


MED-P515# (1 mm)



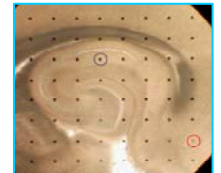
Rat Hippocampus CA3

MED-P530# (2 mm)



Rat Hippocampus

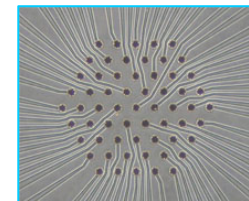
MED-P545A (3 mm)



Rat Hippocampus and peripheral area

2. Hexagonal arrangement (61 electrodes)

Parts number	Electrode size	Interpolar Distance	Reference	Chamber Depth
MED-P2H075	20 μ m	70 μ m	8.5 mm	5 mm
MED-P2H07A	20 μ m	70 μ m	8.5 mm	10 mm



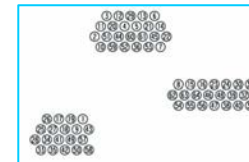
MED-P2H07#

Close up view (left) and arrangement of microelectrodes (right)



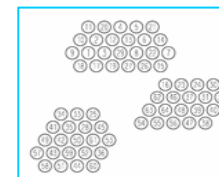
3. Hippocampal Pattern Arrays (CA1, CA3, & DG)

Parts number		Electrode size	Interpolar Distance	Reference	Chamber Depth
MED-P50015	For Rat	50 μ m	150 μ m	8.5 mm	5 mm
MED-P5001A	For Rat	50 μ m	150 μ m	8.5 mm	10 mm
MED-P50025	For Mouse	50 μ m	150 μ m	8.5 mm	5 mm
MED-P5002A	For Mouse	50 μ m	150 μ m	8.5 mm	10 mm



MED-P5001#

Arrangement of microelectrodes (left) and micrograph of rat hippocampal slice (right)



MED-P5002#

Arrangement of microelectrodes